



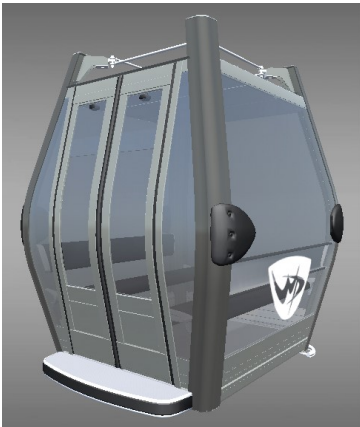
FOR IMMEDIATE RELEASE
MARCH 12, 2018

CONTACTS: Steve Hurlbert / Communications Director
Shurlbert@winterparkresort.com / 970-726-1573

WINTER PARK TO ADD NEW GONDOLA FOR 2018-19

Zephyr Express Replacement Part of Nearly \$30 Million In Capital Improvements

WINTER PARK, Colo. – Winter Park Resort’s venerable Zephyr Express chairlift will be replaced by a new 10-person gondola, part of \$28.2 million in capital improvements that will be in place in time for the 2018-19 winter season. Other additions include the first phase of a complete overhaul of Winter Park’s snowmaking system, increased lift maintenance, snowcats, and 21 acres of logging in Eagle Wind Territory to improve glade skiing.



The gondola will increase uphill capacity to 3,600 guests per hour, decreasing wait times by 15 minutes during peak season while swiftly and comfortably delivering guests to the Lodge at Sunspot. The \$16 million Leitner-Poma gondola project will feature a cutting-edge energy saving direct drive system, making it environmentally sound as well as efficient. The regulatory approval process for the new gondola is currently underway and construction is slated to begin in the spring. The gondola will be Winter

Park’s first on-mountain lift installation since the Panoramic Express was added in 2007.

In addition to the new gondola, Winter Park will upgrade its antiquated 42-year old snowmaking system with new energy efficient components, pipe replacement, and high-tech snowmaking guns. The \$4 million system will ideally allow Winter Park to open additional terrain earlier each season.

In addition to the big-ticket additions, Winter Park is also investing heavily in maintenance with significant earmarks geared for lift upkeep, grooming equipment, and snow guns. Logging operations will also be conducted over 21 acres of Eagle Wind Territory improving the gladed skiing experience in the area while also contributing to the overall health of the forest by removing dead and dying timber that will promote forest revegetation.

Winter Park is the beneficiary of the commitment by Alterra Mountain Company to continually improve the guest experience at each of its 12 mountain destinations. Over the next five years, Alterra has pledged more than half a billion dollars in capital improvements, spending \$130 million across its destinations for 2018-19 and \$110 million each subsequent year.

ABOUT WINTER PARK RESORT

Located just 67 miles from Denver, Winter Park Resort is Colorado’s longest continually-operated ski resort, with over 3,000 acres of world-class terrain spread out over seven unique territories that is now accessible via train thanks to Winter Park Express train service from Denver. Nestled along the Continental Divide, Winter Park boasts over 325” of annual snowfall, setting up perfect conditions for exploring miles of cruising groomers, six terrain parks, bumps, steeps, trees, and most definitely deeps. Winter Park is also the proud home to the renowned National Sports Center for the Disabled (NSCD). For more information, please visit www.winterparkresort.com.