



Winter Park Tech Specs

FOH SYSTEM

- (18) L-Acoustics V-DOSC Loudspeakers (9 Per Side)
- (12) L-Acoustics SB218 Subs (6 Per Side)
- (3) L-Acoustics dv-DOSC Front Fill
- (1) L-Acoustics SB218 + (2) L-Acoustics ARCS Side Fills
- Avid Venue Profile or S6L Audio Console

MONITOR SYSTEM

- (8) L-Acoustics 115xt Monitors w/Cue
- (1) L-Acoustics 15p Drum Sub
- (8) Monitor Mixes
- Avid Venue SC48 or S6L Audio Console

MICS ETC.

- Standard compliment of Shure mics, DI's, Stands, Cables, Sub-Snakes and Split.

LIGHTING SYSTEM

- DS Truss 35' with S4 Par Wash
- US Truss 35' with LED Par Wash
- (6) GLP X4L
- (6) High End Systems SolaSpot Pro 2000
- (8) Martin Mac 101
- (9) Elation SixBar1000
- High End Systems Road Hog 4

Technical Specifications of Hideaway Park Stage

STAGE AND CANOPY

- 54' x 42' Performance Stage
- 26' canopy height at upstage, 33' canopy height at downstage
- Due to its unique design Slope of canopy over stage varies from 2 in 12 to 4 in12
- See Fig. 5 for specific stage dimensions
- Stage Material: acid-etched "sandscape" concrete. (stage is lightly etched with acid to expose fine aggregates)
- Snowmelted Stage, stairs and ramps
- Accessible via 2 sets of upstage stairs, ADA compliant ramp, and 1 set of downstage stairs, and 2 loading dock height barn doors.
- 40'x14'x 9'clear height Backstage Storage Building, w/ (2) Upstage Barn Doors, & (2) Downstage Barn Doors & (1) 3'-0" x 7'-0" swinging door. Provides upstage wind screening
- 27'-4"x 7'-8"x 9'clear height Monitor Mix / Electrical Room Building at Stage Left, w/ Barn doors to stage. Provides Stage Left Wind Screening
- Stage right wind screen constructed of steel posts and wood slats.
- Stage structure (at 3' downstage of Backstage Storage Building) can accommodate a backdrop banner or hung video screen.

GREEN ROOM AND GREEN ROOM PLAZA

- 1375 SF Green Room Building
- Located Stage right
- Men's restroom with 1 toilet, 1 urinal, 1 sink / vanity
- Women's restroom with 2 toilet, 1 sink / vanity
- Dual Height Drinking Fountain
- No Showers
- 833 sf Assembly Space with Kitchen Sink, Dishwasher, Refrigerator, Kitchen cabinetry (Upper and Lower)
- Mechanical / Utility Room
- 25 foot wide operable glass wall accessing Green Room Plaza
- 225Amp Panelboard serving the Green Room and Mechanical

STAGE FRONT TERRACE

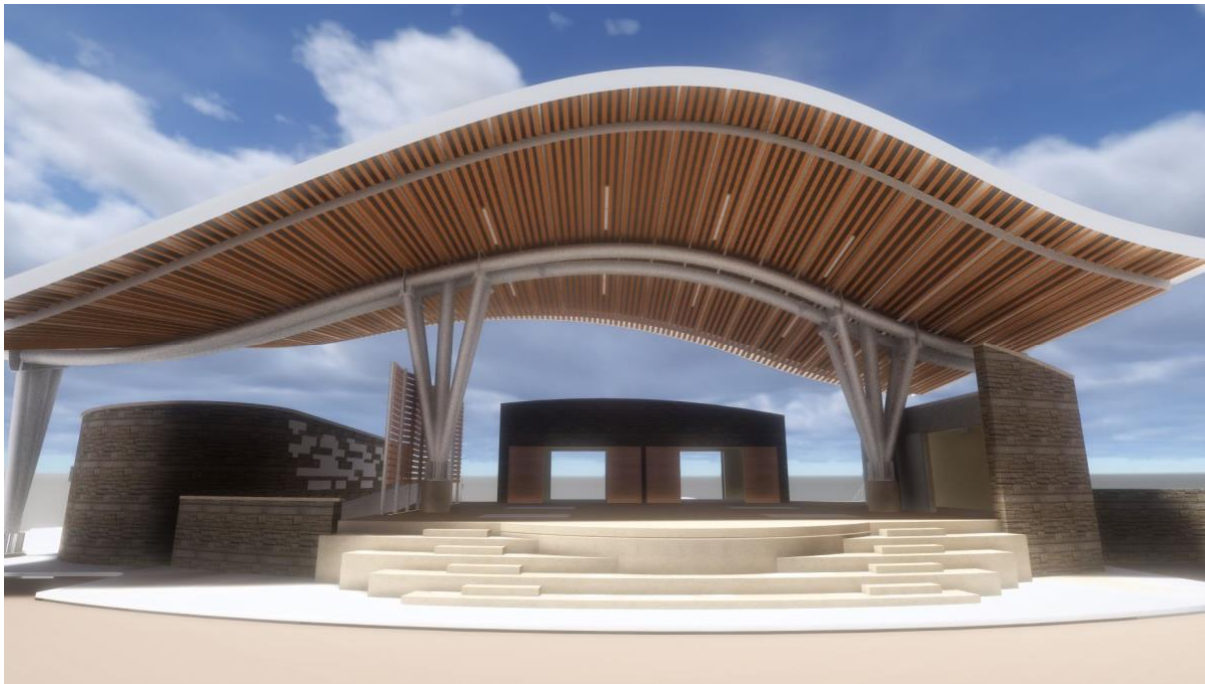
- 1920 square feet
- Concrete Paving
- Trench Drain
- Provides pad of 970 square feet for Merchandise Tent at stage left.

STAGE DECK POWER SPECIFICATIONS

- Service Capacity 1200Amps via a Main Distribution Panel adjacent to stage left.
- 200Amp connection chamber / company switch for Sound equipment
- 200Amp connection chamber / company switch for Lighting equipment
- 200Amp connection chamber / company switch for Rigging equipment

FRONT STAGE VIEW-(FIGURE 4)

- Stage Front, Stage Front Stairs, Canopy Roof



PLAN VIEW-(FIGURE 5)

